

TITLE / DESCRIZIONE
Single hole, deck-mount mixing faucet with 220mm long Sanitary Lever and 295mm swivel nozzle (Ø 25mm). 50mm-long mounting shank, G1/2" male inlets, high flow ceramic cartridge, brass, chrome plated, Sanitary Lever - fiber glass reinforced Polyamide.

DRN / DIS

CHD / VER

APPR

SCALE / SCALA 1:6

DATE / DATA 03/03/2020

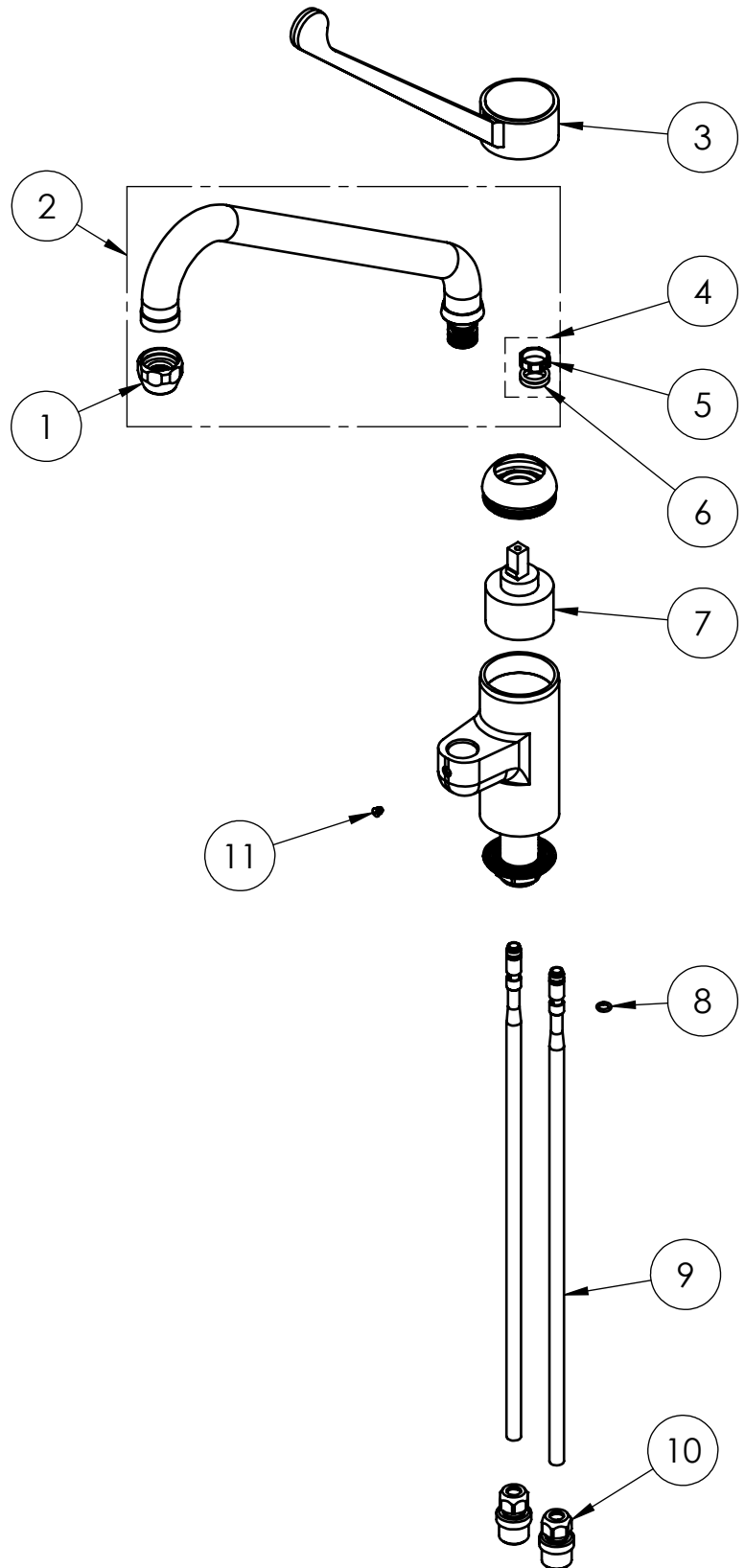
SHEET / PAG 1 of 2

NUMBER / CODICE DIS.

MODEL / PRODOTTO
1E.2901.87.72

A4V

| ITEM NO. | SALES NO. | DESCRIPTION |
|----------|-----------|--|
| 1 | P014 | STREAM REGULATOR OUTLET (Ø25 SPOUT) |
| 2 | C087 | SWING NOZZLE Ø 25x295h.130 |
| 3 | H002 | ELBOW OPERATED GRAY LEVER (L.220mm) |
| 4 | P613 | #2 OR+#1 SWIVEL SLEEVE KIT FOR FAUCET/OUTLET |
| 5 | P592 | SWIVEL SLEEVE |
| 6 | P072 | O-Ring 119 (Ø 15,08 x 2,62mm) EPDM 70 |
| 7 | V070 | Ø47 MIXING CARTRIDGE |
| 8 | P158 | O-RING 106 (Ø6.75x1.78), EPDM 70 |
| 9 | P498 | COPPER PIPE L.420mm w.O-RING |
| 10 | P110 | Compression Male G1/2 fitting |
| 11 | P236 | SPOUT SCREW (short) |



TITLE / DESCRIZIONE
Single hole, deck-mount mixing faucet with 220mm long Sanitary Lever and 295mm swivel nozzle (Ø 25mm). 50mm-long mounting shank, G1/2" male inlets, high flow ceramic cartridge, brass, chrome plated, Sanitary Lever - fiber glass reinforced Polyamide.

DRN / DIS

CHD / VER

APPR

SCALE / SCALA 1:5

DATE / DATA 03/03/2020

SHEET / PAG 2 of 2

NUMBER / CODICE DIS.

MODEL / PRODOTTO
1E.2901.87.72

A4V